

## Miniature Double Ended Beam



### FEATURES

- Capacities: 10 - 50t
- High side load tolerance
- Electroless nickel plated alloy tool steel
- Surge protection optional for 10t to 50t

### OPTIONAL FEATURES

- Hermetically sealed available
- FM approval available

### DESCRIPTION

MDB is designed for truck and rail scales in high capacities with low profile. The design of loading through a ball is insensitive to side load.

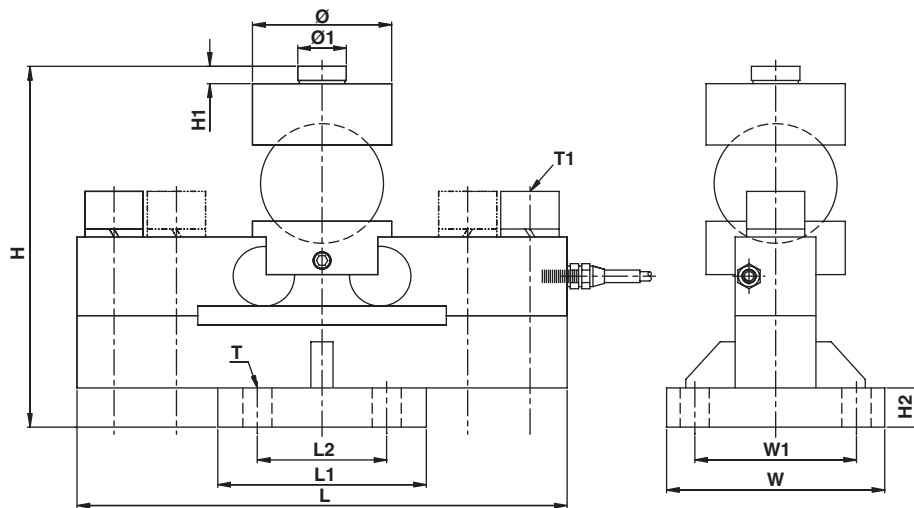
MDB is constructed of alloy steel and is fully potted and sealed with special chemical compounds to IP67 providing excellent protection against water and

moisture attack. MDB Hermetically-Sealed is constructed to IP68 providing excellent protection against corrosive and wash-down environments.

### APPLICATIONS

- Truck/rail scales
- Silo/hopper/tank weighing

### OUTLINE DIMENSIONS



#### Wiring diagram

+ Excitation	Red
- Excitation	Black
+ Signal	Green
- Signal	White

CAPACITY		L	L1	L2	H	H1	H2	Ø	Ø1	W	W1	T	T1
10/ 20/ 25/ 30t	mm	240	125	80	230	11	20	88	30	135	100	4-Ø18	2-M24
	(inch)	9.45	4.92	3.15	8.85	0.43	0.79	3.46	1.18	5.31	3.94		
40 - 50t	mm	340	160	124	261	11	20	98	40	160	124	4-Ø21	4-M24
	(inch)	13.38	6.30	4.88	10.28	0.43	0.79	3.86	1.57	6.30	4.88		

## SPECIFICATIONS

PARAMETER	VALUE	UNIT
NTEP/OIML Accuracy class	Non-Approved	
Maximum no. of intervals (n)	3000	
$Y = E_{\max}/V_{\min}$	5000	Maximum available
Standard capacities ( $E_{\max}$ )	10000, 20000, 25000, 30000, 40000, 50000	kg
Rated output-R.O.	2.0	mV/V
Rated output tolerance	0.2	±% of rated output
Zero balance	1	±% of rated output
Non linearity	0.030	±% of rated output
Hysteresis	0.030	±% of rated output
Non-repeatability	0.020	±% of rated output
Creep error (20 minutes)	0.030	±% of rated output
Zero return (20 minutes)	0.030	±% of rated output
Temperature effect on min. dead load output	0.0026	±% of rated output/°C
Temperature effect on sensitivity	0.0015	±% of applied load/°C
Compensated temperature range	-10 to +40	°C
Operating temperature range	-20 to +60	°C
Safe overload	150	% of R.C.
Ultimate overload	300	% of R.C.
Excitation, recommended	10	Vdc or Vac rms
Excitation, maximum	15	Vdc or Vac rms
Input impedance	770±10	Ohms
Output impedance	700±5	Ohms
Insulation resistance	>5000	Mega-Ohms
Cable length	13.5	m
Construction	Nickel plated alloy steel	
Environmental protection	IP67	

All specifications listed subject to change without notice.

FM Approval

Intrinsically Safe: Class I, II, III; Div. 1 Groups A-G

Non-Incendive: Class I; Div. 2 Groups A-D

## Disclaimer

All product specifications and data are subject to change without notice.

Vishay Precision Group, Inc., its affiliates, agents, and employees, and all persons acting on its or their behalf (collectively, "Vishay Precision Group"), disclaim any and all liability for any errors, inaccuracies or incompleteness contained herein or in any other disclosure relating to any product.

Vishay Precision Group disclaims any and all liability arising out of the use or application of any product described herein or of any information provided herein to the maximum extent permitted by law. The product specifications do not expand or otherwise modify Vishay Precision Group's terms and conditions of purchase, including but not limited to the warranty expressed therein, which apply to these products.

No license, express or implied, by estoppel or otherwise, to any intellectual property rights is granted by this document or by any conduct of Vishay Precision Group.

The products shown herein are not designed for use in medical, life-saving, or life-sustaining applications unless otherwise expressly indicated. Customers using or selling Vishay Precision Group products not expressly indicated for use in such applications do so entirely at their own risk and agree to fully indemnify Vishay Precision Group for any damages arising or resulting from such use or sale. Please contact authorized Vishay Precision Group personnel to obtain written terms and conditions regarding products designed for such applications.

Product names and markings noted herein may be trademarks of their respective owners.

---